

玻璃钝化桥式整流器
GLASS PASSIVATED BRIDGE RECTIFIERS
MB05M THRU MB10M
特征 FEATURES

- * Plastic package has Underwriters Laboratory Flammability Classification 94V-0
- * This series is UL listed under Recognized under Component Index, file number E252843
- * Glass passivated chip junctions
- * High surge overload rating:35A peak
- * Saves space on printed circuit board
- * High temperature soldering guaranteed: 260°C/10 seconds, at 5 lbs (2.3kg) tension

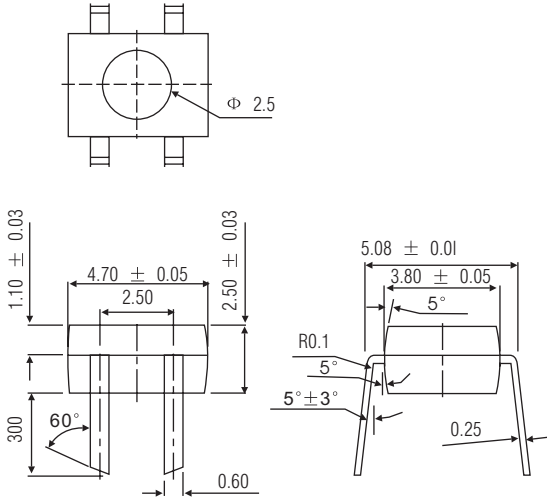
机械数据 MECHANICAL DATA

CASE: Molded plastic body over passivated junctions
 Terminals:plated leads solderable per MIL - STD-750, Method 2026

Polarity:Polarity symbols marked on body

Mounting Position:Any

Weight:0.078 ounce, 0.22 gram



Unit: inch(mm)

极限值和电参数 TA=25°C 除非另有规定

Maximum Ratings&Electrical Characteristics Ratings at 25°C ambient temperature unless otherwise specified

	SYMBOLS	MB05M	MB1M	MB2M	MB4M	MB6M	MB8M	MB10M	UNITS
最大可重复峰值反向电压 Maximum recurrent peak reverse voltage	VRRM	50	100	200	400	600	800	1000	Volts
最大均方根电压 Maximum rms voltage	VRMS	35	70	140	280	420	560	700	Volts
最大直流阻断电压 Maximum dc blocking voltage	VDC	50	100	200	400	600	800	1000	Volts
最大正向平均整流电流 Maximum average forward output rectified current at TA=30°C	I(AV)	0.5 0.8							Amps
正向峰值浪涌电流 8.3ms 单一正弦半波 Peak forward surge current 8.3ms single half sine-wave superimposed on rated load (JEDEC Method)	IFSM	35							Amps
额定功率 Rating for fusing (t<8.3ms)	I ² t	5.0							A ² sec
最大正向电压降 Maximum forward voltage drop per leg at 4.0A	VF	1.0							Volts
最大反向漏电流 Maximum DC reverse voltage current at rated DC blocking voltage per leg	IR	5.0 500							μA
典型结电容 Type junction capacitance VR=4.0V f=1.0MHz	CJ	13.0							pF
典型热电阻 Typical thermal resistance per leg	R θ J-L R θ J-A R θ J-A	20.0 85.0 70.0							°C/W
工作温度和存储温度 Operating and storage temperature range	TJ,TSTG	-55 to + 150							°C

NOTES:

1. On glass epoxy P.C.B. mounted on 0.05 x 0.05" (1.3 x 1.3mm) solder pads
2. On aluminum substrate P.C.B. with an area of 0.8 x 0.8 x 0.25"(20x20x6.4mm) mounted on 0.05x0.05" (1.3x1.3mm) solder pad
3. Measured at 1.0 MHz and applied reverse voltage of 4.0 Volts

RATING AND CHARACTERISTIC CURVES (TA=25°C UNLESS OTHERWISE NOTED)

MB05M THRU MB10M

FIG.1-DERATING CURVE OUTPUT RECTIFIED CURRENT

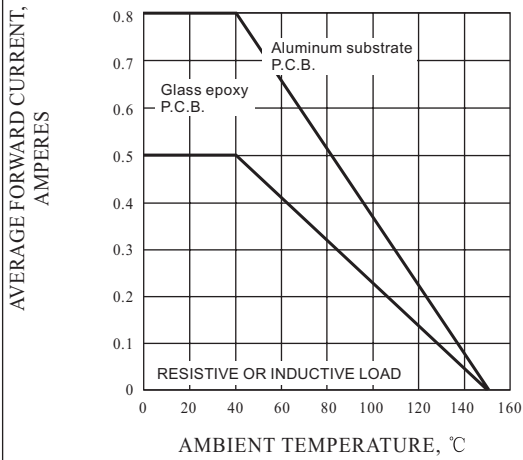


FIG.2-MAXIMUM NON-REPETITIVE PEAK FORWARD SURGE CURRENT PER LEG

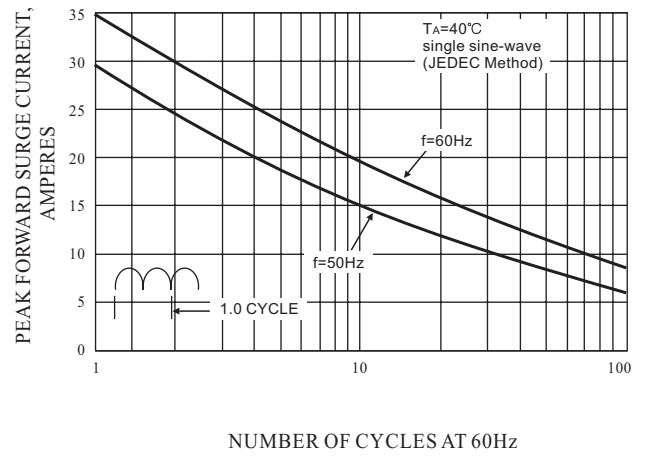


FIG. 3 - TYPICAL FORWARD VOLTAGE CHARACTERISTICS PER LEG

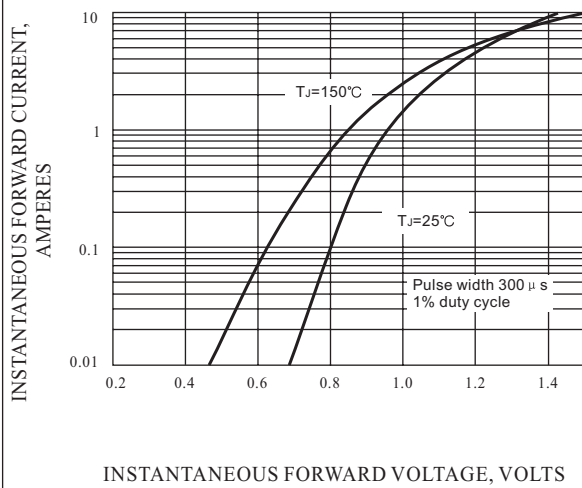


FIG. 4 - TYPICAL REVERSE LEAKAGE CHARACTERISTICS PER LEG

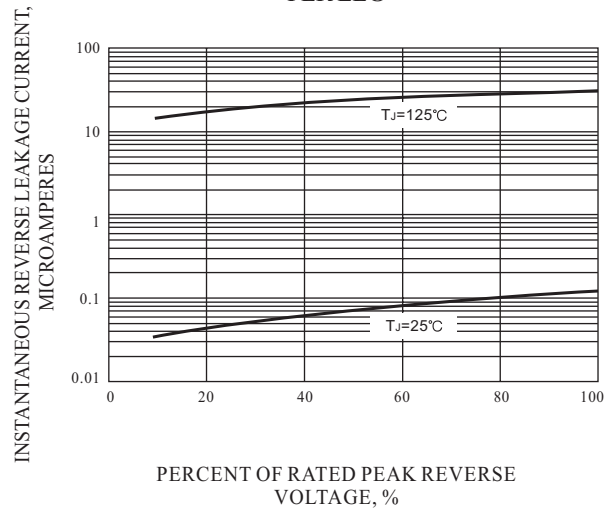


FIG. 5 TYPICAL JUNCTION CAPACITANCE PER LEG

